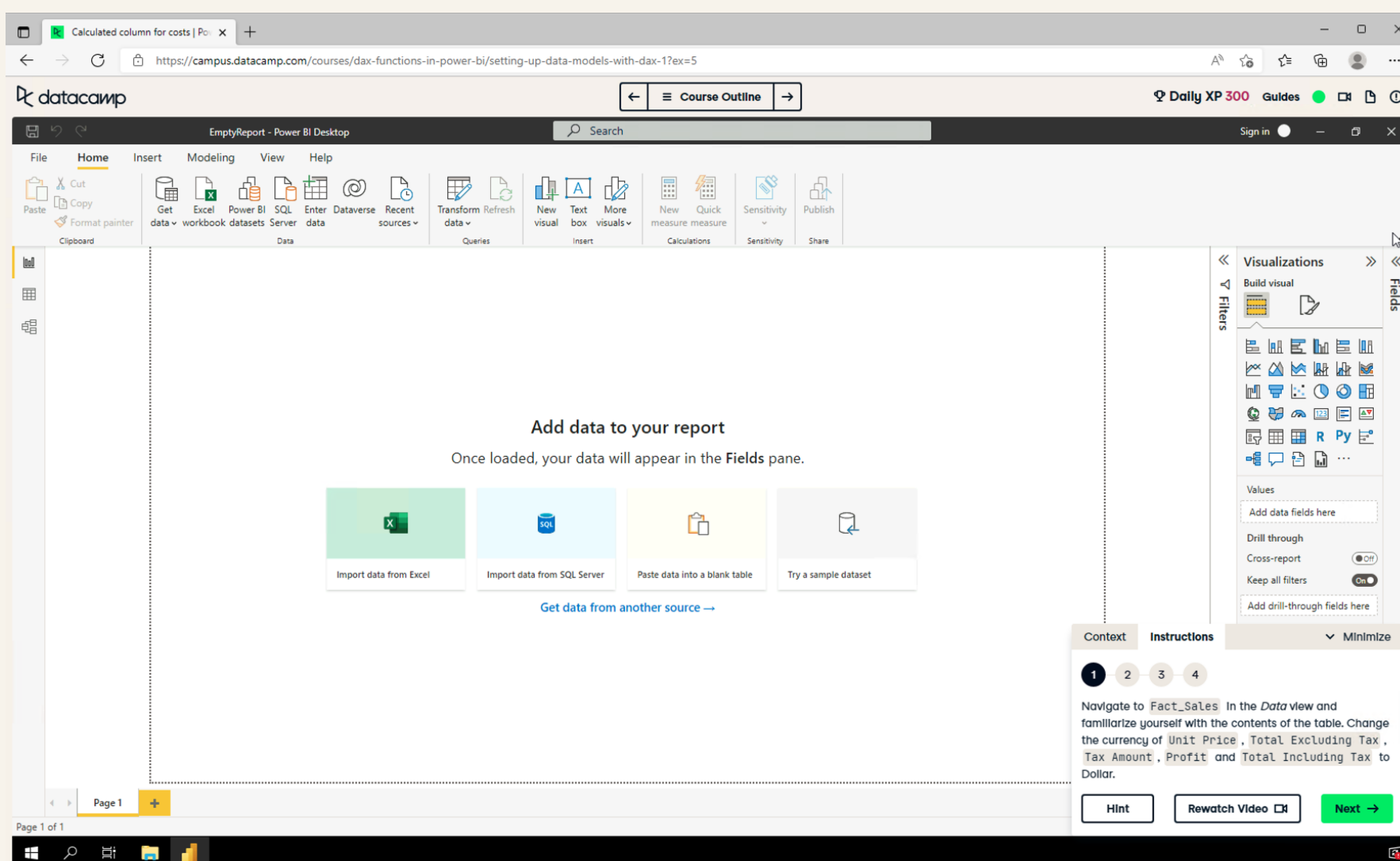


# Data Analyst in Power BI

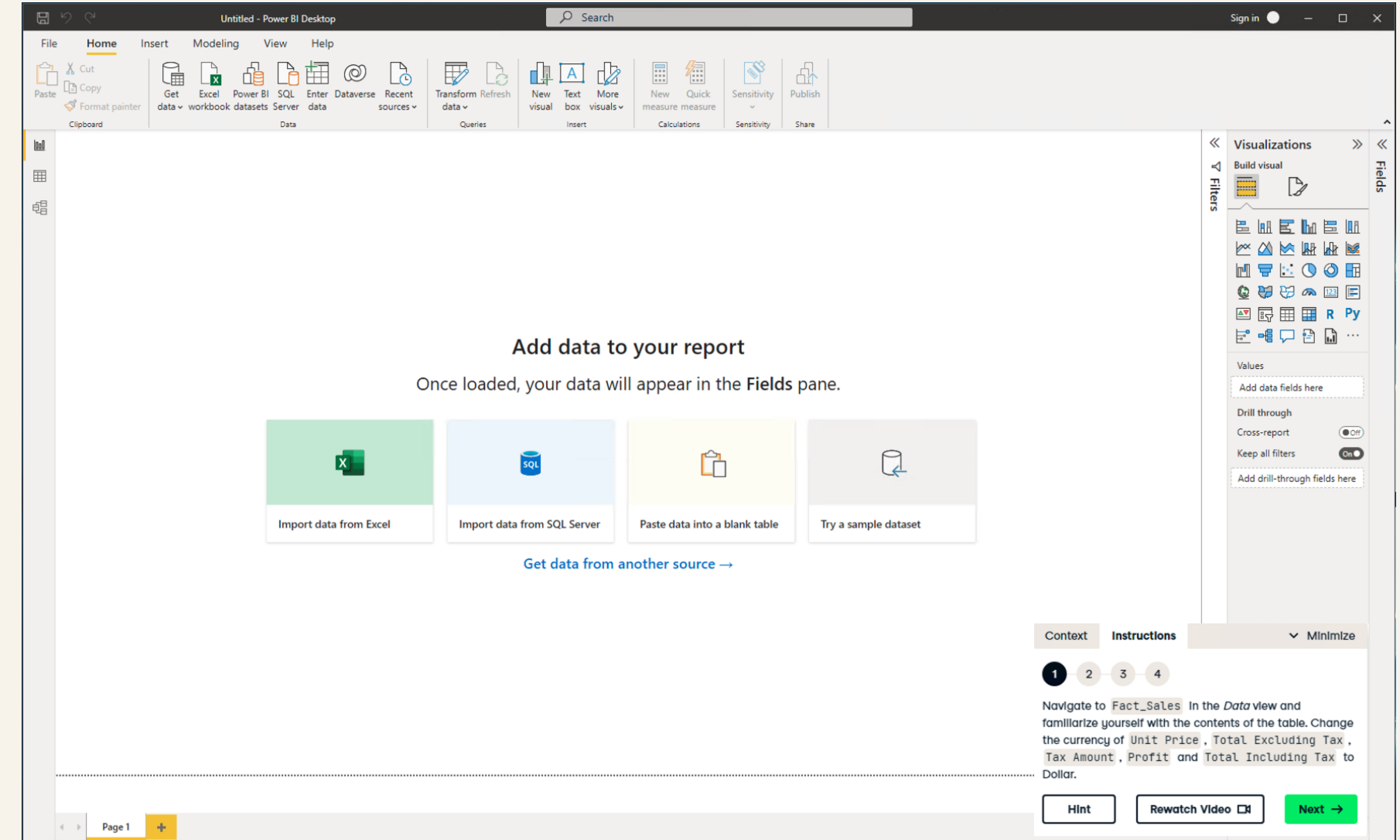
💡 There are two ways to complete a course:

## 1 Take the course on DataCamp



Power BI on a Datacamp virtual machine in your browser.

## 2 Take the course on your local machine



Power BI on your local machine.

- 1 Follow the instructions to complete the exercises.
- 2 That's it. Everything is prepared for you here in the browser!

- 1 Make sure you have Power BI Desktop installed, or download [it here](#).
- 2 Download the exercises and datasets from the course overview page. Follow the instructions on DataCamp.

ⓘ Note Power BI is only supported by the Windows operating system.